



Lab Scope and DVOM Standard Accessories

- 4-lead set
- Channels 1 and 2 are shielded
- Secondary probe
- RPM probe

MODIS™ System Optional Accessories

Fan Filters (5 pack)	EAK0253B02A
Auxiliary Battery Pack	EAK0253B05A
Additional Battery Pack Charger	EAA0273B06A1
Low Amps Probe	EETA111A
Soft Carry Case	2 - 01965A 02
SIA 2000	EAK0242E14A

Lab Scope/DVOM Module Optional Accessories

Expanded Labscope and DVOM capabilities with these optional probes. DC Current amps, pressure, vacuum, secondary ignition, coil on plug and distributorless ignition systems

- Ignition Coil Adapters
 - Stick EAC0056L03A
 - Single Flag EAC0056L00A
 - Two Flag EAC0056L01A
 - Three Flag EAC0056L02A
- Split Lead Adapter EEMS301A05
- 100 PSI Pressure / Vacuum Transducer w/cable EEPV302AL
- 500 Pressure Transducer w/cable EEPV302AT
- 5000 Pressure Transducer w/cable EEPV302AH
- Transducer Extension Cable EAX0024B30A

Specifications

Function	Range	Accuracy/Comments
Channels	1 - 4	Common Ground
Sample Rate	6.0 Mega samples per second	Simultaneous Across 4 Channels @ 1.5 MS/S per Channel
Bandwidth	V dc - 3 Mhz	3 dB point @ MHz
Input Impedance	10 MOhm @ V dc 5.8 kOhm @ 3 MHz	All channels
VDC (Full Scale)	100 / 50 / 20 / 10 / 5 / 2 / 1 V dc 500 / 200 / 100 m V	
V~ (Full Scale)	50 / 20 / 10 / 5 / 2 / 1 V dc	
Peak to Peak Voltage	500 / 200 / 100 mV	
RPM Measurement	0 - 10000 RPM	
Secondary Ignition	1 - 50 kV	Channels 1 and 2
DVOM		
Function	Range	Comments
Input Channels	3 & 4	Isolated Ground
Input Impedance	10 MOhm	
Glitch Capture	± 50 ms	
Resistance	40 / 4 MOhm 400 / 40 / 4 kOhm 400 Ohm	Auto Ranging
V dc/V ac	400 / 40 / 4 / 0.4	Auto Ranging
V ac in Peak to Peak Voltages	400 / 40 / 4 / 0.4	
Diode Test	2 Volt scale	

MODIS™

Modular Diagnostic Information System

This 1st MODIS™ upgrade for 2005 sees the addition of new software, information and functionality to assist the modern vehicle technician diagnose faster and with greater accuracy.

With the introduction of our 3 NEW Asian titles, Toyota, Honda and Nissan, MODIS™ now boasts 20 major manufacturer titles, covering over 5000 vehicle model and engine combinations. Add to this the powerful EOBD (European On-Board Diagnostic) software and our experienced based TroubleShooter™ information, MODIS™ is the diagnostic tool for today and tomorrow.

NEW Asian titles covering 2002 and 2003 year models

- Honda - 16 model/engine combinations
- Toyota - 23 model/engine combinations
- Nissan - 18 model/engine combinations

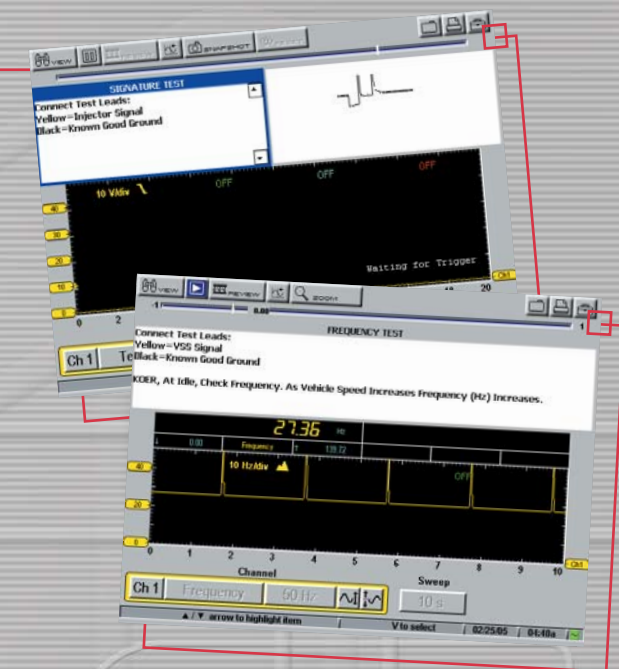
Providing engine codes, data and functional tests, plus automatic transmission, ABS and Airbag codes.

11 ENHANCED major vehicle manufacturers titles covering up to 2003 and 2004 year models

- Alfa Romeo
- Lancia
- Opel/Vauxhall
- MG
- VW
- SEAT
- Fiat
- Landrover/Range Rover
- Ford
- Rover
- Audi
- Skoda

EOBD European On-Board Diagnostics Expanded Features

- Industry 1st - Communications with the NEW Volvo V50 and S40 models
- Rate based monitoring/in use performance tracking - expanded visibility of all EOBD tests



New Feature

- MODIS™ Component Test Meter (CTM) 46 individual key components, plus abbreviations and descriptions.

- | | |
|--------------------------|-------------------------|
| 1 Baro Sensor | 24 Pick-up digital |
| 2 Knock Sensor | 25 Injector (-) Control |
| 3 EGR Solenoid | 26 Injector (+) Control |
| 4 MC Solenoid | 27 Solenoids |
| 5 Cold Start Injector | 28 Switches |
| 6 Air Flow Meters | 29 TDC AC Type |
| 7 CKP AC Type | 30 TPS Linear |
| 8 ECT Sensor | 31 Pick-up AC Type |
| 9 IAC 2-wire | 32 TPS Switch |
| 10 CKP Digital Type | 33 Pick-up digital type |
| 11 CKP (TDC) Hall Effect | 34 VSS AC Type |
| 12 CMP AC Type | 35 TDC Digital Type |
| 13 CMP Digital Type | 36 TDC Hall Effect |
| 14 IAT Switch | 37 Thermo-time Switch |
| 15 IAT Themistor | 38 VSS Digital type |
| 16 ICM | 39 ABS WSS |
| 17 EGR Position Sensor | 40 Output haft AC |
| 18 ISC DC Motor | 41 Output haft DIG |
| 19 IAC Valves | 42 Turbine Shaft AC |
| 20 MAP Analog | 43 Turbine Shaft DIG |
| 21 O2S Heater | 44 Shift Solenoid |
| 22 O2S Zirconia | 45 TCC Solenoid % |
| 23 Pick-up AC | 46 TCC Solenoid On/Off |



www.sun-diagnostics.com

Nothing contained within this publication is intended to extend any warranty or representation, expressed or implied, regarding the products described herein. Any such warranties or other terms or condition of sale of products shall be in accordance with Snap-on/Sun Standard Terms and Conditions of Sale for such products, which are available on request. The manufacturer reserves the right to change or delete models and/or specifications without prior notice. Snap-on and SUN are registered trademarks.

* Selected languages only

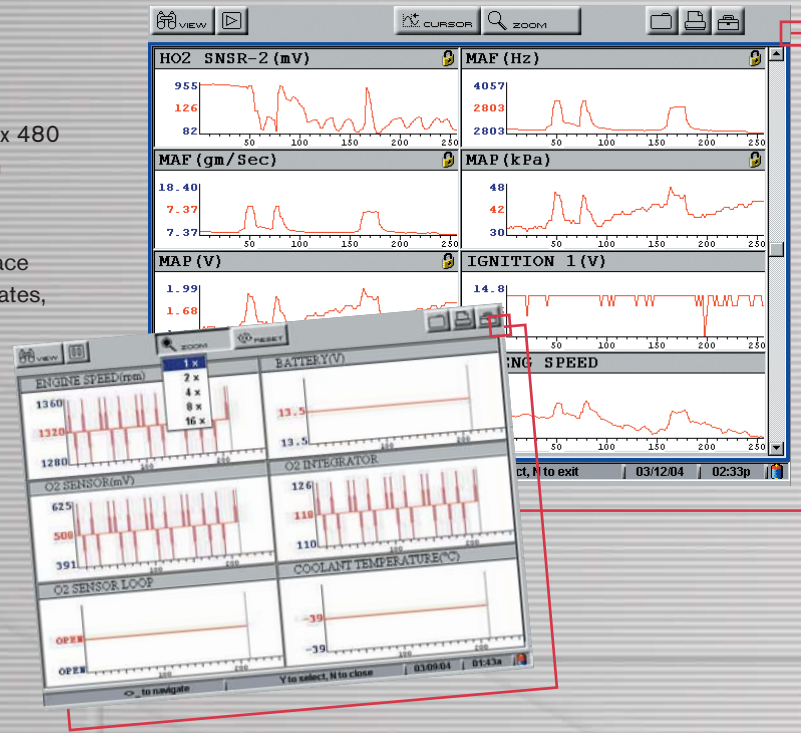
flexibility, adaptability, profitability

Standard Features

- Colour, liquid crystal, full VGA backlit display 640 x 480
- Mouse style, multidirectional thumb pad navigation
- Infrared output for compatible wireless printers
- USB and serial ports for future expandability
- VGA output for remote display or projection interface
- Two Compact Flash slots for regular software updates, storage, and wireless communication

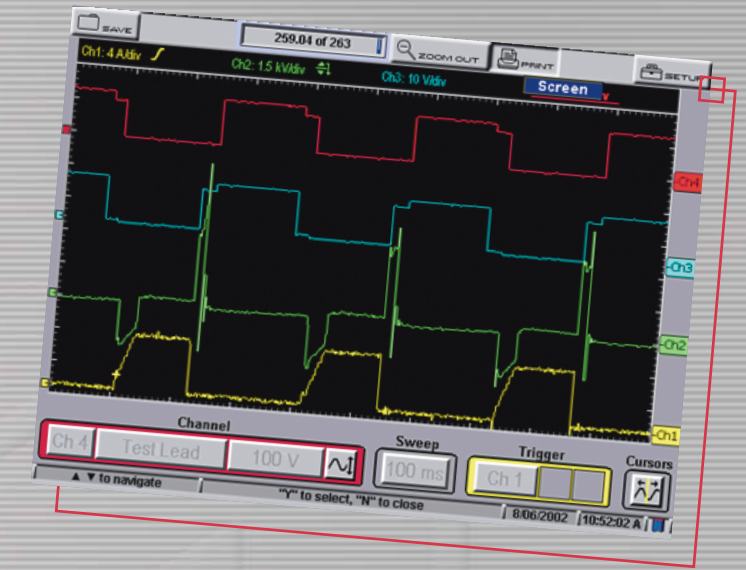
Scanner™ On-Board Diagnostics Features

- Enhanced coverage of multiple systems for 20 major automotive manufacturers
- Includes code retrieval with detailed definitions, code clearing, live data for most systems, functional tests, and movie capture for over 5,000 vehicle configurations
- Parameter data readings presented in multiple graph modes or table list
- Regular software updates deliver powerful new functionality



Multiple Secondary Ignition capability

- Ignition scope actively displays the full ignition system status
- Parade, Raster, Superimposed and 5ms Single Ignition Views
- Conventional, Wasted Spark, and COP ignition compatible
- SIA 2000 required



Ignition Scope

Secondary Ignition Parade Mode

- Parade cylinder firing in a series across one channel – for distributor and direct ignitions
- Parade cylinder firing in a series across two channels for wasted spark systems

Multiple Secondary Ignition

- Raster and superimposed functions aid waveform diagnosis by stacking the firing cylinders

Single Cylinder Mode

- New Cylinder 5ms mode displays a single cylinder regardless of ignition type
- The auto trigger on RPM produces a consistent view of the waveform

FAST

EASY

POWERFUL

For full details of the software and information coverage provide by MODIS™, please refer to the Sun Software and Applications Guide, a copy is available on request from your local Sun representative.

Lab Scope Plug-In

- 4-Channel Scope: Captures and displays "live" signals with up to four traces graphed from 6 million samples every second
- Displays digital readout along with each waveform to determine voltage at any selected point on the waveform as well as min and max values
- Snapshot: Capture and review up to 263 sweeps continuously saved into a buffer
- Easy Scroll: Streamlines selection of menu and toolbar items
- AC Coupling: Provides the ability to enlarge the alternating current (AC) component of a signal for closer examination
- Invert: Flip waveform to adjust for flexible hookups and easier viewing
- Autofind: Automatically pre-configure the vertical scale
- Load Configuration: Designed to allow the user to select factory preset screens or define a custom setup to retrieve for regular use; frequent tests are automatically configured to help diagnose the performance of sensors, actuators and circuits on a vehicle

Dual Graphing Multimeter and DVOM

- Actively graph 2 channels in the Multi-Meter mode
- Display intermittent faults and glitches like no other Multi-Meter
- Apply the power of lab scope into an easy to use application
- Auto scaling, high-impedance DVOM measurement system
- Pinpoint measurement of:
 - DC volts
 - AC Volts RMS
 - Ohms
 - Continuity with audible beep
- Digital display turns red to alert out-of-calibration condition
- Min and Max capture displays drop and peak values



Power/Weight/Dimensions

- Batteries: Nickel-metal hydride battery pack.
- Dimensions:

Width	Depth	Height	Weight with Plug-ins
14 inches	3-3/8 inches	7-3/4 inches	5-11 lbs.-oz.
356 mm	86mm	197 mm	2579 g